

Prospective Risk Adjustment Solution for Identifying Suspected Conditions

Key benefits

- **Optimal ROI** - improve RAF capture by analyzing membership and network performance to identify priority areas and outreach opportunities
- **Additional Revenue** - generate a more complete and accurate list of suspected conditions utilizing administrative *and* clinical data
- **Care Gap Identification** - empower providers with member-level analytics to improve management of chronic conditions
- **Financial Visibility** - estimate financial opportunity and impact of risk adjustment for both MA and ACA commercial populations based on configurable, market-specific inputs
- **Operational Efficiency** - target and design prospective campaigns for the highest ROI based on actionable intelligence
- **Performance Management** - evaluate effectiveness of prospective efforts and identify provider improvement opportunities through timely tracking of RAF capture and easily navigable reports

Health Fidelity's Risk Analytics solution is a powerful tool for prospective risk adjustment, providing advanced analytics to optimize risk capture.

Risk Analytics identifies prospective risk adjustment opportunities in the form of suspected conditions that are neither documented nor billed to governing entities. Health Fidelity's Risk Analytics identifies suspected chronic conditions that have otherwise been missed due to incompleteness or inaccuracy. Additionally, Risk Analytics produces confidence scores for each suspected condition, allowing users to better understand the probability of confirming these suspects and enabling the most accurate estimation of prospective opportunities.

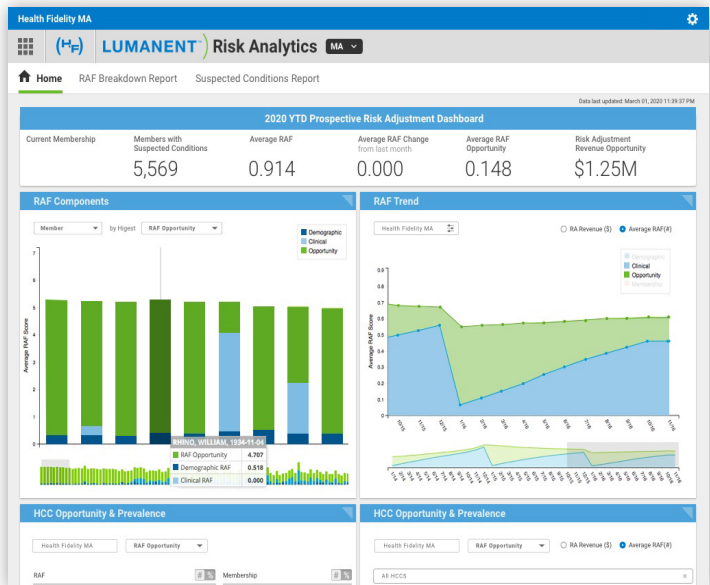
These suspected conditions can be communicated back to providers to help them assess, document, and code for the members' missing conditions. The resulting patient encounters drive more accurate diagnoses and improvements in care quality, along with superior financial performance and regulatory compliance. Risk Analytics' suite of KPIs, visualizations, and reports provides actionable data that help form your prospective campaign strategies. Our data acquisition engine securely ingests data from a wide range of sources including medical claims, pharmacy claims, and the standard MA outputs like MMR, MOR, EDPS, RAPS, to improve risk score accuracy.

Finally, RiskAnalytics offers the ability to configure inputs particular to your organization and market, thereby providing a customized understanding of the financial impact and opportunity associated with prospective risk adjustment. Organizations can estimate potential impact to revenue (MA) or transfer payments (ACA) and perform sensitivity analysis by adjusting configurable inputs.

Suspected Conditions Report

The Suspected Conditions Report displays diagnoses representing risk adjustment opportunity for each member.

Client ID	IPA ID	Member Number	Last Name	First Name	Date of Birth	Gender	HCC Code	Hierarchy Excludes HCC	HCC Model	Suspect Type	Primary Suspect CDR-9	Primary ICD-9
999	999	1248547564	TOMRES	HOWARD	1946-05-23	M	58		v22	PROSPECTIVE	296.7	F31.9
999	999	1253189156	BUTLER	JOY	1938-12-03	F	68		Rd016	PROSPECTIVE	530.81	K21.9
999	999	1253189157	HALLS	BRITANY	1940-07-17	F	45		Rd016	PROSPECTIVE	272.0	E78.0
999	999	1256419837	HALE	NELSON	1933-09-10	M	42		Rd016	PROSPECTIVE	244.9	E03.9
999	999	1256419837	HALE	NELSON	1933-09-10	M	187		Rd016	PROSPECTIVE	401.1	I10
999	999	1256419837	HALE	NELSON	1933-09-10	M	243		Rd016	PROSPECTIVE	365.11	
999	999	1258985107	BRADLEY	LETA	1948-07-19	F	96		v22	PROSPECTIVE	407.81	
999	999	1258985107	BRADLEY	LETA	1948-07-19	F	188		Rd016	PROSPECTIVE	414.00	I25.10
999	999	1259381776	POWELL	TYLER	1948-11-09	M	45		Rd016	PROSPECTIVE	272.0	E78.0
999	999	1259381776	POWELL	TYLER	1948-11-09	M	187		Rd016	PROSPECTIVE	401.9	I10
999	999	1260390338	SANCHEZ	ADISON	1960-09-20	F	188		Rd016	PROSPECTIVE	414.00	I25.10
999	999	1273828744	MARTINEZ	BENJAMIN	1948-02-17	M	111	112	v22	PROSPECTIVE	486	J44.9
999	999	1274360457	MITCHELLE	CLARENCE	1908-06-24	M	68		Rd016	PROSPECTIVE	530.81	K21.9
999	999	1280139705	HICKS	LIAM	1944-08-03	M	58		v22	PROSPECTIVE	296.80	F31.9
999	999	1280139705	HICKS	LIAM	1944-08-03	M	188		Rd016	PROSPECTIVE	348.90	O43.909
999	999	12843418	SMAS	JUNE	1922-03-15	F	19		v22	PROSPECTIVE	250.00	E11.9
999	999	12843418	SMAS	JUNE	1922-03-15	F	45		Rd016	PROSPECTIVE	272.0	E78.0
999	999	12843418	SMAS	JUNE	1922-03-15	F	111	112	v22	PROSPECTIVE	481.21	J44.9
999	999	12843418	SMAS	JUNE	1922-03-15	F	228	237	Rd016	PROSPECTIVE	272.0	J44.909
999	999	1293190851	PORTER	GEORGIA	1929-12-22	F	45		Rd016	PROSPECTIVE	272.4	E78.5
999	999	1293190851	PORTER	GEORGIA	1929-12-22	F	111	112	v22	PROSPECTIVE	486	J44.9
999	999	1293190851	PORTER	GEORGIA	1929-12-22	F	188		Rd016	PROSPECTIVE	414.00	I25.10
999	999	1310841951	HOLT	HEDI	1940-02-03	F	19		v22	PROSPECTIVE	250.00	E11.9



Solution Specs

Key Performance Indicators

Instantaneously view the key performance metrics that are most important to your organization and campaign initiatives

Current Membership	Displays the current membership for the organization.
Members with Suspected Conditions	Displays the number of members that have at least one prospective risk adjustment opportunity.
Average RAF	Displays the current average RAF score for the organization.
Average RAF Change	Displays the change in average RAF score from last month to the current date.
Average RAF Opportunity	Displays the incremental RAF that an organization could capture if all outstanding suspected conditions are confirmed.
Risk Adjustment Revenue Opportunity	Displays the approximate financial impact for the organization based on the applicable market's payment methodology, outstanding suspected conditions, and configurable user inputs. Metric can be switched on or off.

Visualizations

Access and analyze in real-time actionable data that help form your prospective campaign strategies to optimize ROI

RAF Components Graph	Presents relative concentrations of risk across demographic factors, confirmed clinical conditions, and outstanding prospective opportunity throughout the provider network. Group by payer, medical group, site, provider, or member.
HCC Opportunity Graph	Presents highest-opportunity HCCs and their prevalence within the membership. Understand expected costs, and compare to prospective opportunity that could be captured through condition-specific interventions.
RAF Trend Graph	Presents demographic, clinical, and prospective RAF over time. Compare RAF capture rates from different areas of the provider network to identify trouble spots early and tailor campaigns and incentives appropriately.
Geographic RAF Map	Presents member condition prevalence and prospective RAF opportunity on a map. Zoom and filter by PCP, site, and medical group to run effective home-visit campaigns and better understand members' geographic distribution.

Reports

Download up-to-date member-level details on all prospective risk adjustment opportunities, including suspect data source and confirmation status

RAF Breakdown Report	Displays RAF values broken out by demographic, clinical, and prospective opportunity. Filter and sort RAF values by payer, medical group, site, provider, or member.
Suspected Conditions Report	Displays suspected conditions representing prospective risk adjustment opportunity for each member. Sort by member info, condition category, risk model, suspect type, primary diagnosis, suspect data source, or confirmation status.
Confirmed Suspects Report	Displays confirmed diagnoses for the current calendar year to track prospective opportunity capture. Sort by member info, condition category, risk model, suspect type, primary diagnosis, suspect data source, or confirmation status.

Configurable Inputs

Customize the values that affect revenue and opportunity calculations specific to each market

Confidence Configurations	Allows user to input minimum confidence score threshold for suspected conditions.
Market-Specific Configurations	Allows user to input plan bid rate (MA) or plan- and state-specific factors (ACA), along with enrollment and performance assumptions. Switch revenue and opportunity calculations (with or without confidence score weightings) on or off throughout application.

Notes:

- (1) Risk Analytics supports Medicare Part C (CMS-HCC), Part D (RxHCC), Medicare ACO (CMS-HCC), ACA Commercial (HHS-HCC), and Managed Medicaid (CDPS+Rx).
- (2) For the ACA commercial population, KPIs, visualizations, and reports can be filtered by age group, market, and plan metal level.
- (3) For the Medicaid population, reports can be filtered by age group and aid category.



Phone: (650) 727-3300 • Email: info@healthfidelity.com

Health Fidelity simplifies risk adjustment, offering risk-bearing organizations clear visibility into and control over the process. Through our NLP-powered solutions and expert advisory services, we uncover insights that enable better care plans and more complete revenue capture. The Lumanent™ suite gives our partners the confidence to pursue and ability to succeed in risk-sharing arrangements across MA, ACA, Medicaid, and ACO programs. To learn more, please visit healthfidelity.com.